

# ICE HOUSE ON MAIN

*Est. 1912*

BEAUTIFUL MEMORIES ARE CREATED AT ICE HOUSE ON MAIN



[www.icehouseonmain.com](http://www.icehouseonmain.com)



[events@icehouseonmain.com](mailto:events@icehouseonmain.com)



(979) 216-0548



@icehouseonmain



# Hello there!

Built in 1912 as the Bryan Ice Company, Ice House on Main has long been part of Downtown Bryan's history. Throughout the years, the building has taken on many roles—from an ice-processing facility to a Coca-Cola bottling plant, a furniture manufacturing site, and even a popular nightclub once known as Cell Block Five.

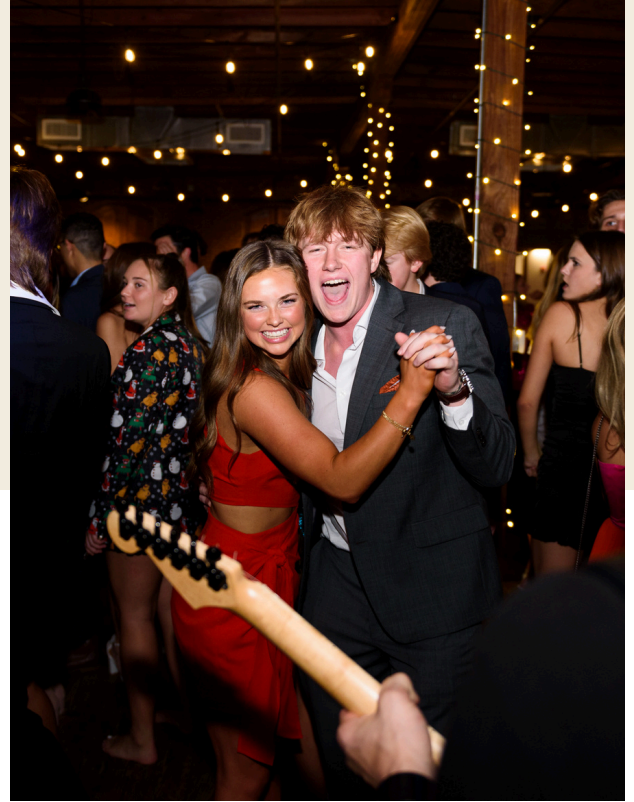
Now beautifully restored, this 20,000 sq. ft. Mission Revival venue blends timeless character with modern versatility. With original wood floors, exposed brick, and soaring beams, Ice House on Main offers unforgettable spaces for all kinds of gatherings — from weddings, galas, and corporate events to showers, concerts, parties, and everything in between.

This packet outlines our pricing and available packages, along with details about what we offer to help bring your vision to life. Whether you're planning an elegant celebration or a casual community event, we're here to make it happen — and make it memorable.

*-Ice House on Main*

# What's Included In Your Rental

- Access to your rented spaces at the timeframe of your choice. **Varies based on rental space & package chosen.**
  - Option to add setup/teardown time for \$250 per hour. These hours must be consecutive to the hours of event time.
  - Additional event hours available upon request. Inquire for pricing.
- 5' round tables (up to 50) - linens not included for round tables.
  - Black floor-length linens available for rent (up to 35) – please inquire!
- Mahogany colored chairs (up to 500).
- High-top tables with black spandex linens (up to 10).
- Various rectangle tables with floor-length black linens.
- Setup and breakdown of venue equipment.
- On-site manager and staff during event hours.



**\*FINAL PRICING MAY VARY BASED ON GUEST COUNT, SECURITY NEEDS, BAR CHOICES, AND TOTAL SPACES RESERVED.**

**\*AN ADDITIONAL CHARGE OF \$14 PER GUEST WILL APPLY FOR EVENTS EXCEEDING 250 ATTENDEES. BASED ON FINAL GUEST COUNT.**

# Banquet Hall

UP TO 500 GUESTS SEATED OR 1,500 STANDING

Rental Type	Non-Prime (Sun–Thurs)	Prime (Fri–Sat)
<b>5-Hour Rental</b>	\$3,470.00	\$4,770.00
<b>16-Hour Rental</b>	\$5,470.00	\$6,970.00

\*5-HOUR RENTALS INCLUDE ACCESS TO THE FLEX SPACE & CATERING SPACE

\*16-HOUR RENTALS INCLUDE ACCESS TO THE FLEX SPACE, CATERING SPACE & **BRIDAL SUITE**



# Performance Venue

UP TO 180 GUESTS SEATED OR 350 STANDING

Rental Type	Non-Prime (Sun–Thurs)	Prime (Fri–Sat)
<b>5-Hour Rental</b>	\$1,975.00	\$3,275.00
<b>16-Hour Rental</b>	\$3,770.00	\$5,970.00

\*5-HOUR RENTALS INCLUDE ACCESS TO THE FLEX SPACE & CATERING SPACE

\*16-HOUR RENTALS INCLUDE ACCESS TO THE FLEX SPACE, CATERING SPACE & **BRIDAL SUITE**



# The Parlor

UP TO 60 GUESTS SEATED OR 100 STANDING

Rental Type:	Non-Prime (Sun–Thurs)	Prime (Fri–Sat)
<b>5-Hours</b>	\$1,950.00	\$2,450.00
<b>10-Hours</b>	\$2,750.00	\$4,750.00



# Photo/Video Sessions

## PHOTO/VIDEO SESSIONS INCLUDE:

- Access to requested areas of the venue.
- On-site manager/ staff member available throughout your rental.
- Use of venue equipment upon request (fees may apply for certain items).

## PHOTO/ VIDEO SESSION PRICING:

Photo and video sessions are priced at \$155 per hour, with a **two-hour minimum** required.

Whether you're planning a proposal, a photography session, a corporate shoot, or even filming a lecture series – Ice House on Main is here to help bring your vision to life!





# Bar Services

As a TABC-certified venue, all alcohol service **MUST** be arranged through Ice House on Main and is not included in the base rental. **No outside alcohol is allowed on the property.**

## STAFFING:

We estimate one bartender per 75 guests, though this may be adjusted based on your selected bar package, event type, and expected alcohol consumption.

All bar staff is provided by Ice House on Main, and staffing fees are \$100 per bartender for the duration of your event.

## SERVICES:

We offer a variety of customizable bar service options to suit your event:

- Cash Bar
- Consumption Bar
- Ticketed Bar
- Hosted Package Bar
- Special Orders

Let us know your vision, and we'll help create the perfect bar experience for your event!

## GRATUITY:

Gratuity is calculated based on your selected bar services.

\*Our Bar Services Packet & Bar Selections Documents give more detailed bar pricing and are usually sent after a tour/ upon request!



# Important Information

## INSURANCE:

At Ice House on Main, you are required to provide proof of liability insurance for your event. The requirements for insurance will be listed on your event contract!

You can conveniently purchase coverage online through eWed Insurance at the link below:

<https://www.ewedinsurance.com/v/?8404>

For assistance or questions, you may contact an eWed Insurance specialist at 800-426-1064.

## SECURITY:

Security is required for all events held at Ice House on Main.

- If alcohol is being served, a **minimum** of two security officers is required.
- The number of officers and the duration of their presence will be determined by the venue, based on your guest count and type of event.

All security arrangements are at the discretion of Ice House on Main to ensure the safety and success of your event.


# We're Excited to Work With You!


We truly look forward to being part of this exciting process! Our team is here to support you every step of the way – from the first tour to the final toast. Whether you're planning an intimate gathering or a large-scale celebration, we're committed to helping you create an unforgettable and seamless event.


If you have any questions about pricing, logistics, or possibilities within the space, please don't hesitate to reach out. We're here to help bring your vision to life – and can't wait to welcome you to Ice House on Main!

*-Ice House on Main*

[www.icehouseonmain.com](http://www.icehouseonmain.com)

 [events@icehouseonmain.com](mailto:events@icehouseonmain.com)

 (979) 216-0548

 @icehouseonmain

